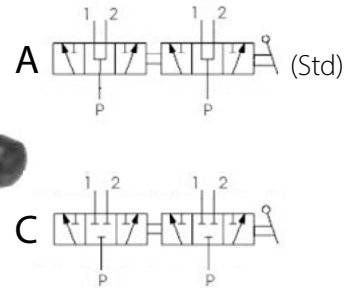


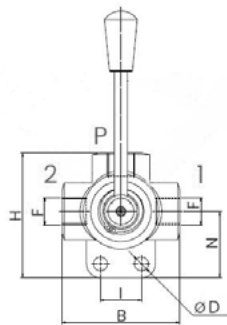
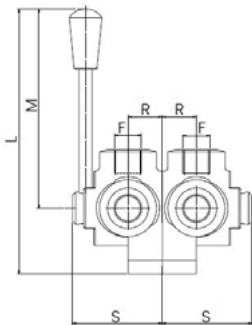
## 6-WAYS MEDIUM PRESSURE MANUAL DIVERTER VALVES

### SPECIFICATIONS

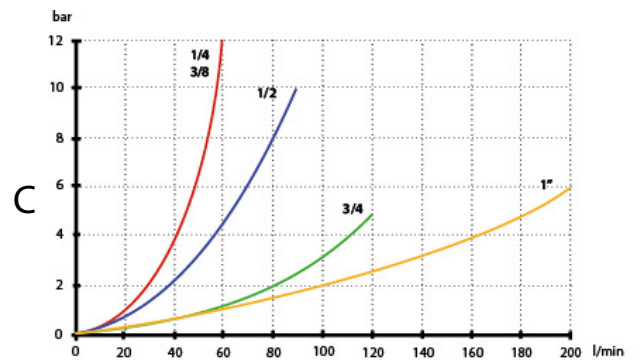
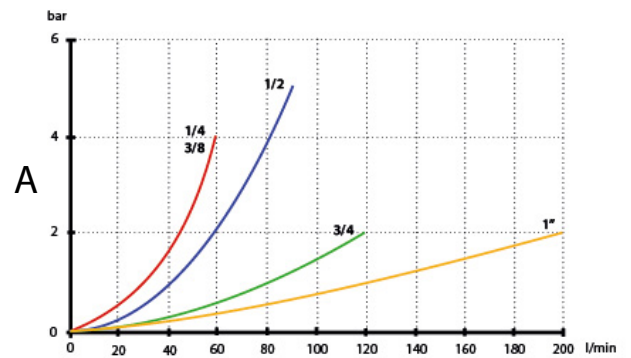
Fluid viscosity:	15-250mm <sup>2</sup> /s
Filtration:	ISO 4406
Fluid temperature:	-20°C + 80°C
Ambient temperature:	-20°C + 50°C



### DIMENSIONS (mm)



### PERFORMANCE



Standard code	Thread	Func	B	H	L	D	I	M	N	S	R	Q max (l/min)	Max Pres	kg
DDF6140-A	1/4	A/C	70	75.5	155.5	8.5	25	115	32	57	21	60+60	350	1.5
DDF6380-A	3/8	A/C	70	75.5	155.5	8.5	25	115	32	57	21	60+60	350	1.5
DDF6120-A	1/2	A/C	80	86	161	8.5	32	115	35	63	24	90+90	350	2.3
DDF6340-A	3/4	A/C	90	98.5	168.5	10.5	32	115	42	67	26	120+120	350	3.5
DDF6100-A	1"	A/C	98	110	176.5	10.5	32	115	50	77	31	200+200	300	5.3