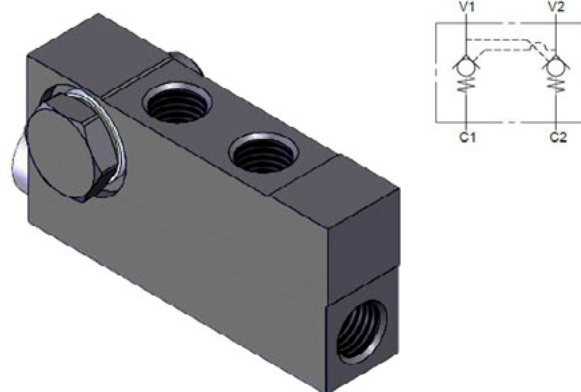


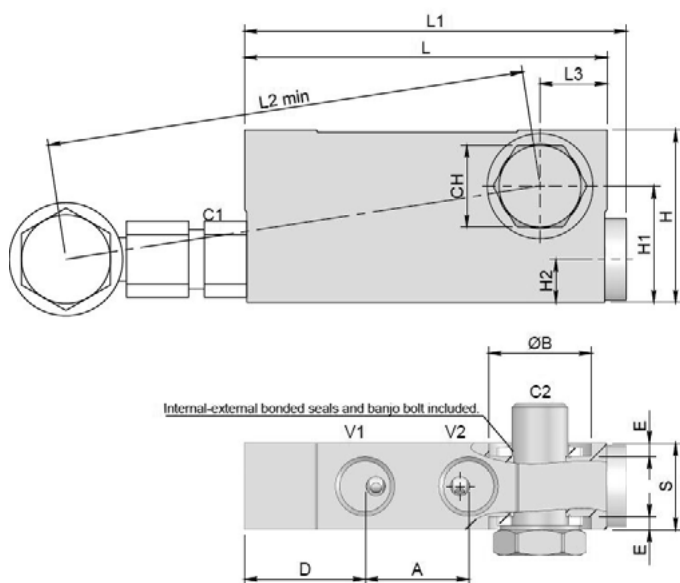
DUAL FLANGEABLE PILOT OPERATED CHECK VALVES

SPECIFICATIONS

Fluid viscosity:	ISO 3448
Filtration:	ISO 4406
Fluid temperature:	-20°C + 90°C
Ambient temperature:	-20°C + 50°C
Max. operating pressure:	300 Bar
Q Max (l/min)	20
Pilot ratio:	4.9 : 1
Standard seals:	NBR
External surfaces:	Zinc plated steel

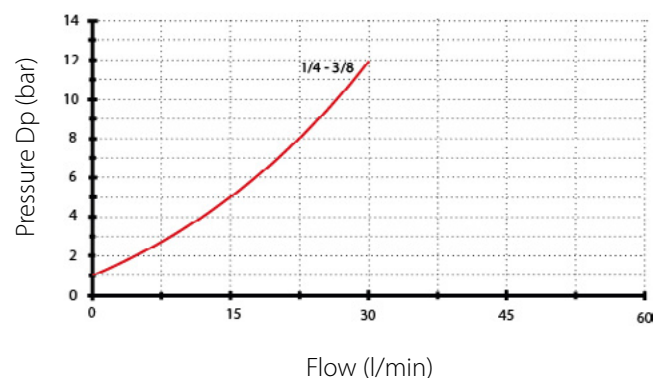


DIMENSIONS (mm)



PERFORMANCE

Oil viscosity 24 mm²/s (3,5 °E) - Temperature 50°C



Standard code	Thread	L	L1	L2	L3	A	ØB	D	E	H	H1	H2	S	CH	kg	Cr. Press
K-DPCLV-F-14	1/4	84	88.5	123	15.5	24	243	28	3	40	27	10	80	19	0.48	1
K-DPCLV-F-38	3/8	86	90.5	127	14	29	27	23	4	45	30.5	12.5	25	22	0.68	1