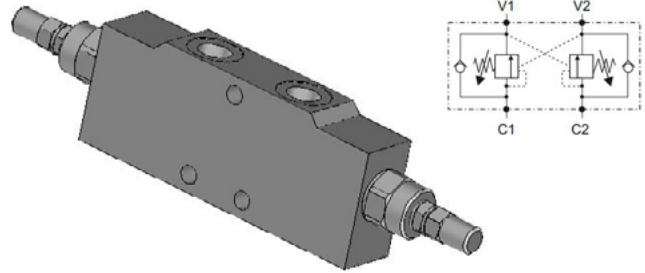


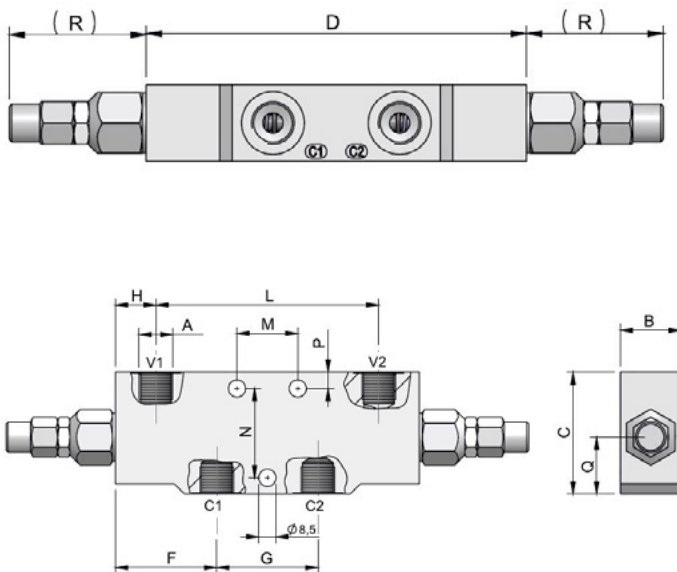
## LOAD CONTROL DOUBLE INTERNAL PILOT

### SPECIFICATIONS

Fluid viscosity:	10-550mm <sup>2</sup> /s
Filtration:	ISO 16/13
Fluid temperature:	-20°C + 80°C
Ambient temperature:	-20°C + 50°C
Max. operating pressure:	350 Bar
Setting at:	5 l/min
Pilot ratio:	4.25 : 1
Range:	60-350
Std Range:	280
Material:	Zinc plated steel

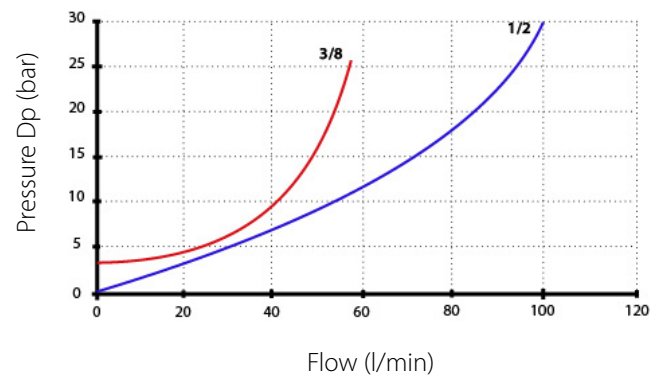


### DIMENSIONS (mm)



### PERFORMANCE

Oil viscosity 24 mm<sup>2</sup>/s (3,5 °E) - Temperature 50°C



### ADJUSTMENT

M  
Standard      Leakproof hex. socket  
screw and cap



Standard code	Thread	B	C	D	F	G	H	L	M	N	P	Q	R	kg	l/min
K-OVCDLV-38	3/8	30	60	150	45	50	20	110	30	44	8	28	54	2.1	40
K-OVCDLV-12	1/2	30	60	150	45	50	20	110	30	44	8	28	54	2	60