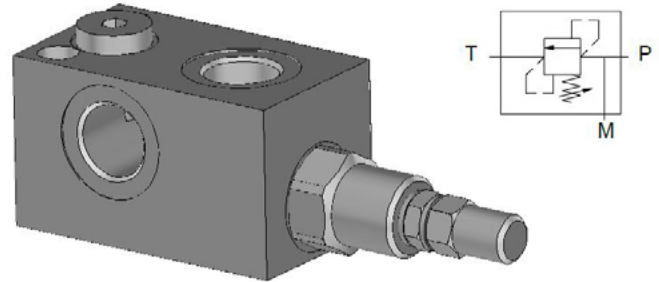


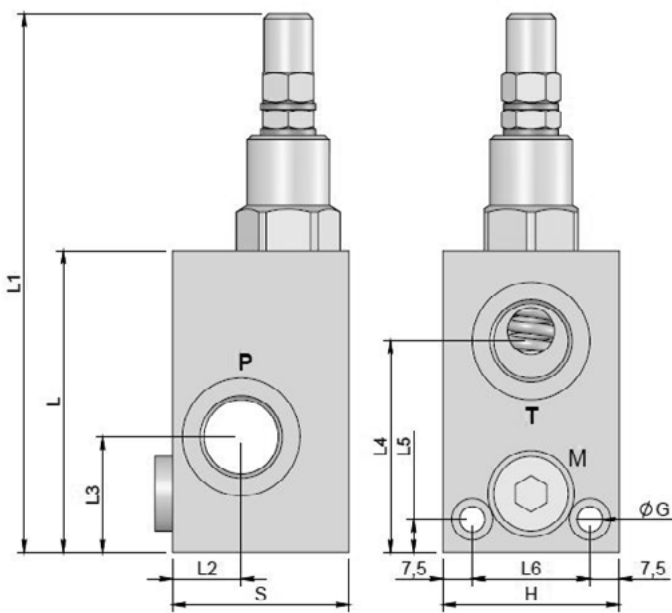
RELIEF VALVES

SPECIFICATIONS

| | |
|--------------------------|-------------------|
| Fluid viscosity: | ISO 3448 |
| Filtration: | ISO 4406 |
| Fluid temperature: | -20°C + 90°C |
| Ambient temperature: | -20°C + 50°C |
| Max. operating pressure: | 350 Bar |
| Standard seals: | NBR |
| Manifold material: | Zinc plated steel |

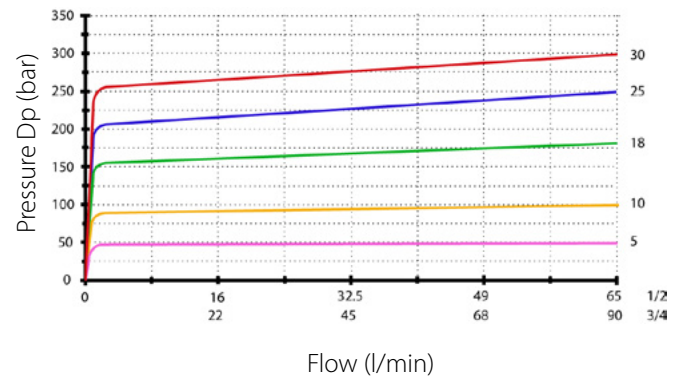


DIMENSIONS (mm)



PERFORMANCE

Oil viscosity 24 mm²/s (3,5 °E) - Temperature 50°C



Std setting at 5 l/min

| | |
|------------------------|---------|
| 30 = 10 - 50 bar | 30 bar |
| 25 = 20 - 100 bar | 70 bar |
| 18 = 10 - 180 bar | 90 bar |
| 10 = 50 - 250 bar | 130 bar |
| 5 = 80 - 300 bar (Std) | 150 bar |

| Standard code | Thread | M | L | L1 | L2 | L3 | L4 | L5 | L6 | G | H | S | Weight (kg) | Q max (l/min) |
|---------------|--------|-----|----|-----|------|------|----|-----|----|-----|----|----|-------------|---------------|
| K-DRLV-70 | 1/2 | 1/4 | 77 | 139 | 17.5 | 29.5 | 54 | 8.5 | 30 | 6.5 | 45 | 45 | 1.0 | 70 |
| K-DRLV-100 | 3/4 | 1/4 | 92 | 154 | 20 | 35 | 68 | 10 | 32 | 8.5 | 50 | 50 | 1.5 | 90 |